

**PLACAS E CONCHAS /
PLATES & FLUSH HANDLES /
PLACAS Y CAZOLETAS.**



IN.16.236.200
Concha de embutir /
Concealed flush handle /
Cazoleta de embutir.

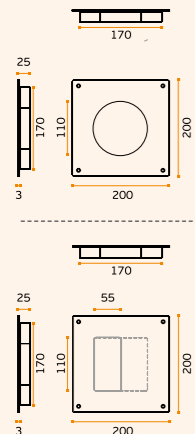
.TB .TG .TCO

MATERIAL: EN 1.4301 / AISI 304

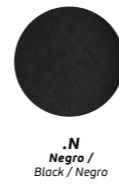
ACABAMENTO / FINISH / ACABADO:
STANDARD: SATINADO / SATIN / SATIN

OPTIONAL: PVD TITANIUM COATED

.TB / .TG / .TCO



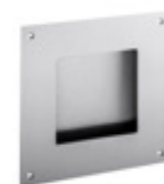
IN.16.236.200
Stainless steel



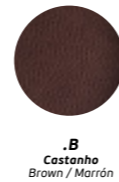
.N
Negro /
Black / Negro



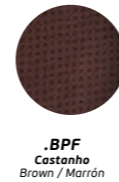
.NPF
Negro /
Black / Negro



IN.16.237.200
Stainless steel



.B
Castanho
Brown / Marrón



.BPF
Castanho
Brown / Marrón



IN.16.238.200
Stainless steel



.C
Camel
Camel / Camel



.CPF
Camel
Camel / Camel

IN.16.235
Concha de embutir /
Concealed flush handle /
Cazoleta de embutir.

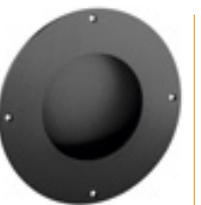
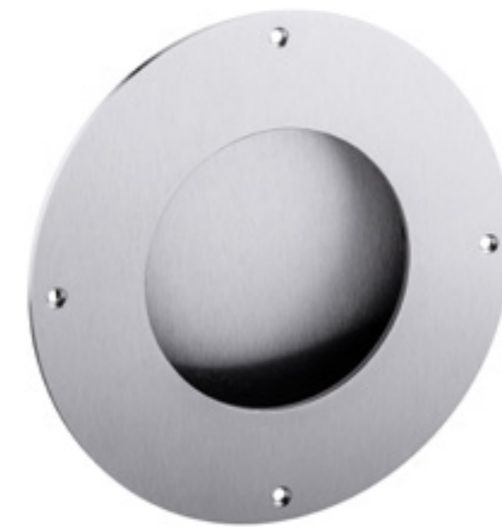
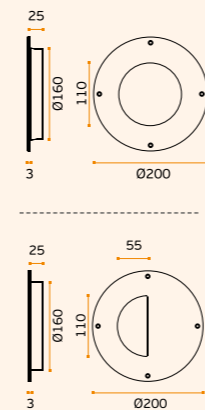
.TB .TG .TCO

MATERIAL: EN 1.4301 / AISI 304

ACABAMENTO / FINISH / ACABADO:
STANDARD: SATINADO / SATIN / SATIN

OPTIONAL: PVD TITANIUM COATED

.TB / .TG / .TCO /



IN.16.235.TB
Titanium black



IN.16.234
Stainless steel



IN.16.234.TG
Titanium gold